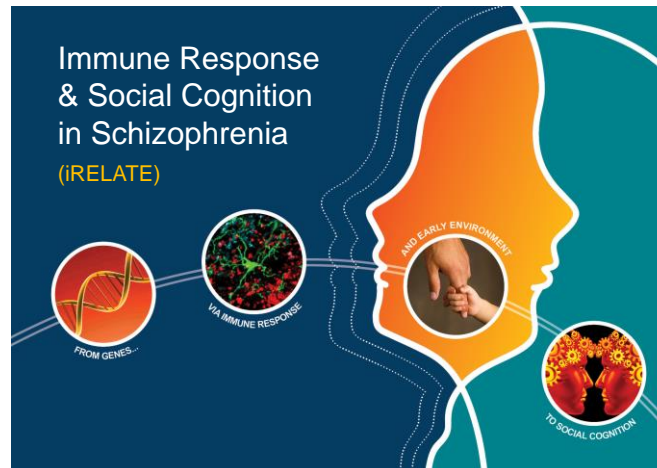


# Student Research Trainee as part of the iRELATE team June 2018 –August 2018



Applications are invited for the position of Research Trainee with the NUI Galway Cognitive Genetics & Cognitive Therapy (CogGene) Group. The CogGene group, led by Professor Gary Donohoe, NUIG Professor of Psychology and ERC award holder, is seeking to recruit an enthusiastic and committed Research Trainee to participate in the research programme entitled '**Immune Response & Social Cognition in Schizophrenia**' (iRELATE). This study is designed to better understand how recently identified genetic risk variants for schizophrenia may influence immune function so as to lead to cognitive deficits. The training position is for a period of three months.

## The iRELATE Study

This research program addresses the question: 'Can deficits in social cognition in schizophrenia be explained by an abnormal immune response that is caused by genetic risk factors and moderated by early social environment? Based on recent discoveries in schizophrenia genetics, this project asks: (1) Are genetic causes of deficits in social cognition mediated by effects on immune function during development, and (2) Does early social environment moderate these effects? The program involves a clinical component. The clinical component focuses on neuropsychological and neuroimaging study of social cognition in patients and healthy adults:

- (1) To provide an innovative characterisation of the effects of inflammatory markers (e.g. pro-inflammatory and anti-inflammatory cytokines) on social cognition,

- (2) To establish whether these markers mediate the effects of recently identified genetic risk loci on schizophrenia, and
- (3) To identify to what extent early social environment (e.g. parental relationships, childhood trauma) moderates this relationship.

## **JOB DESCRIPTION**

The Research Trainee will assist with the recruitment of research volunteers, undertake detailed neuropsychological assessments of patients and healthy controls and data management. The Research Trainee will have day to day supervision from a senior member of the team (Dr. Dauvermann) and participate in weekly progress meetings. All necessary training will be provided.

The offered main training opportunities are:

- (1) To participate in the collection of clinical and neuropsychological data,
- (2) To score assessment forms and enter results on a database,
- (3) To perform basic quality control procedures,
- (4) To participate in weekly mentoring as part of a strongly multidisciplinary team.

Criteria for the post are:

- Demonstrated interest in cognitive psychology, neuropsychology, or clinical psychology (e.g. based on final year dissertation),
- Evidence of the ability to work independently and collaboratively,
- Evidence of excellent oral and written communication skills,
- Highly motivated, with excellent organisational skills.

The Research Trainee will work under the direct supervision of Dr. Dauvermann. Further informal enquiries concerning this position may be made by contacting Dr. Dauvermann, [maria.dauvermann@nuigalway.ie](mailto:maria.dauvermann@nuigalway.ie); Tel. (091) 49 5953.

